

## General Description

AS1225 series are a group of positive voltage output, high precise, and low power consumption voltage regulator. Voltages are selectable in 100mV steps within a range of 1.2V to 3.6V. It also can be customized on command.

AS1225 series have excellent load and line transient response and good temperature characteristics, which can assure the stability of chip and power system. And it uses trimming technique to guarantee output voltage accuracy within  $\pm 2\%$ .

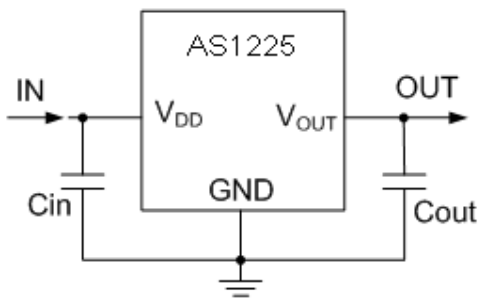
## Features

- Low Quiescent Current: 26uA @5V
- High PSRR: 60dB range to 1KHz
- Low Output Noise: 44uVRMS
- Low Dropout: 430mV@1.5A
- Maximum output current: 2.5A
- Highly Accurate:  $\pm 2\%$
- Low ESR Ceramic Capacitor Compatible

## Applications

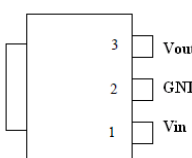
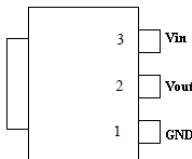
- Reference Voltage Source
- Battery Powered Equipment
- PC Peripherals
- Wireless Devices
- Instrumentation

## Typical Circuit



Item	Description
Vin	Input terminal and Supply pin for internal circuit
GND	Ground
Vout	Output terminal

## Pin Configurations

Product Classification	Selection Guide	
	AS1225①②-③/TR-④	
SOT223 (A Type ) 	①	Package L: SOT223
	②	Package Type A: Blank B: B pin
	③	Output Voltage 1.2: 1.2V 1.5: 1.5V 1.8: 1.8V 2.5: 2.5V ..... 5.0: 5.0V
SOT223( B Type) 	TR	Packing Type: TR: Tape&Reel
	④	Green Type: LF: Lead Free HF: Halogen-Free