

Features

- Dropout voltage typically 0.8V @ I_o = 1A
- Output current in excess of 1A
- Output voltage accuracy ±2%
- Quiescent current, typically 600µA
- Internal short circuit current limit
- Internal over temperature protection

Applications

- CD-R/W
- ADSL
- Cable Modem
- Set-Top-Box
- LAN switch/Hub
- Router
- DVD-R/W

General Description

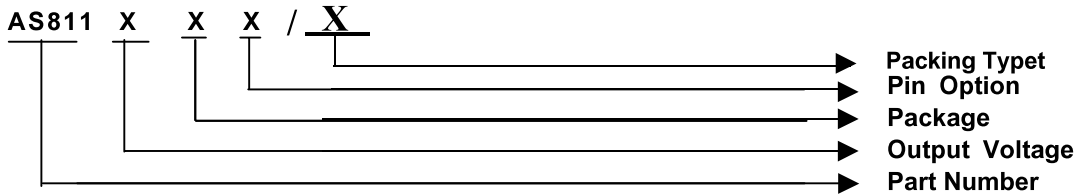
The AS8112 positive 3.3V voltage regulator features the ability to source 1A of output current with a dropout voltage of typically 0.8V over the entire operating temperature range. A low quiescent current is provided over the entire current output current range. The typical quiescent current is 0.6mA. Furthermore, the quiescent current is smaller when the regulator is in the dropout mode (V_{IN} < 3.3V).

Familiar regulator features such as over temperature and over current protection circuits are provided to prevent it from being damaged by abnormal operating conditions.

Ordering Information

| ORDER NUMBER | PACKAGE TYPE | PIN OPTION | | |
|--------------|--------------|-----------------|-----|------------------|
| | | 1 | 2 | 3 |
| AS8112L2/TR | SOT223 | V _{IN} | GND | V _{OUT} |
| AS8113L2/TR | SOT223 | V _{IN} | GND | V _{OUT} |
| AS8114L2/TR | SOT223 | V _{IN} | GND | V _{OUT} |

Order Number Identification

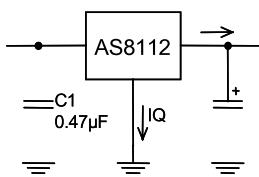


PACKAGE TYPE
L : SOT223
R : TO252
S : TO263

PIN OPTION
1 2 3
2 : V_{in} GND V_{out}

PACKING
U & D : Tape & Reel Direction
T : Tube

Typical Application



Package Type

