

■ GENERAL DESCRIPTION

AS5418 is designed with high efficiency step down DC-DC converter for portable devices applications. It features with extreme low quiescent current with no load which is the best fit for extending battery life during the standby mode. The device operates from 2.5V to 5.5V input voltage and up to 2A output current capability. High 1.3MHz internal frequency makes small surface mount inductors and capacitors possible and reduces overall PCB board space. Further, build-in synchronous switch makes external schottky diode is no longer needed and efficiency is improved.

AS5418 is designed base on pulse width modulation(PWM) for low output voltage ripple and fixed frequency noise, low dropout mode provide 100% duty cycle operation. Low reference voltage is designed for achieving regulated output down to 0.6V.

■ FEATURES

- ◆ Achieve 95% efficiency
- ◆ Input Voltage: 2.5V to 5.5V
- ◆ Output Current: up to 2A
- ◆ Reference voltage: 0.6V
- ◆ Quiescent Current 240uA with No Switching
- ◆ Internal switching frequency 1.3MHz
- ◆ No Schottky Diode needed
- ◆ Low Dropout Operation: 100% Duty Cycle
- ◆ Shutdown current <1uA
- ◆ Excellent Line and Load Transient Response
- ◆ Over-current and over-temperature protection

■ APPLICATION

- ◆ Blue-Tooth devices
- ◆ Cellular and Smart Phones
- ◆ Personal multi-media Player
- ◆ Wireless Networking
- ◆ Digital Still Cameras
- ◆ Portable Application

■ TYPICAL APPLICATION(Adjustable)

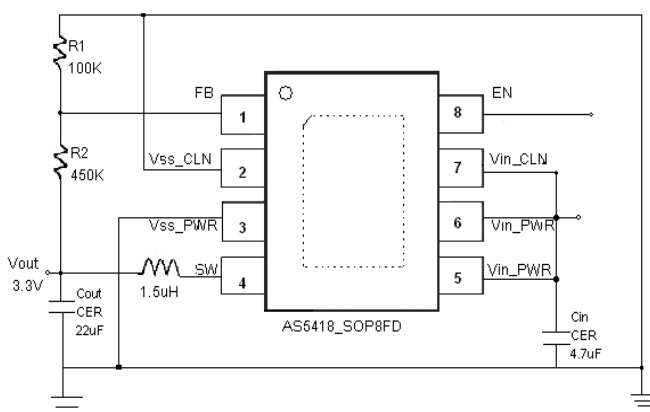


Fig.1

