

Descriptions

AS2910 series are low-dropout linear voltage regulators with a built-in voltage reference module, error correction module and phase compensation module. AS2910 series are based on the CMOS process and allow high voltage input with low quiescent current. This series has the function of internal feedback resistor setting from 3V to 5V. The output accuracy is $\pm 2.5\%$.

Features

- ◆ High Output Accuracy: $\pm 2.5\%$
- ◆ Input Voltage: up to 16V
- ◆ Output Voltage: 3.0V to 5.0V
- ◆ Ultra-low quiescent current: 3uA(TYP.)
- ◆ $I_{OUT}=100mA@V_{IN}=5.3V, V_{OUT}=3.3V$
- ◆ Importation Good Stability: 0.1%/V
- ◆ Low Temperature Coefficient

Application

- ◆ Electronic Weighbridge
- ◆ Cordless Phones
- ◆ Security Products
- ◆ Power Meters, Water Meters

Typical Application

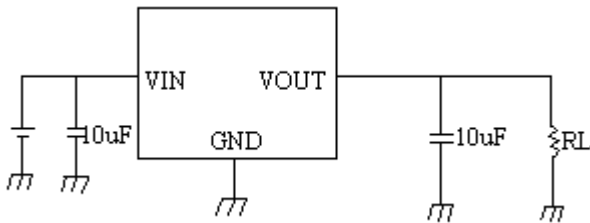
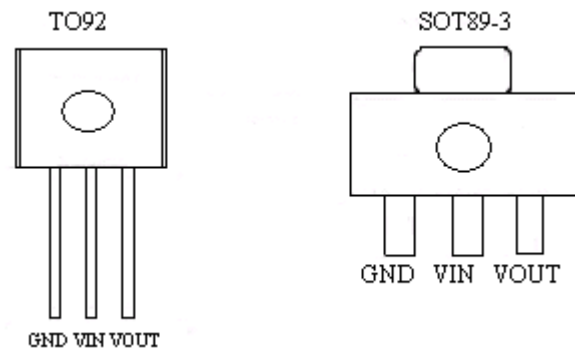


Fig.1

Pin Configuration



Pin Assignment

Package		Name	Function
SOT89-3	TO92		
1	1	GND	Ground
2	2	VIN	Input Pin
3	3	VOUT	Output Pin